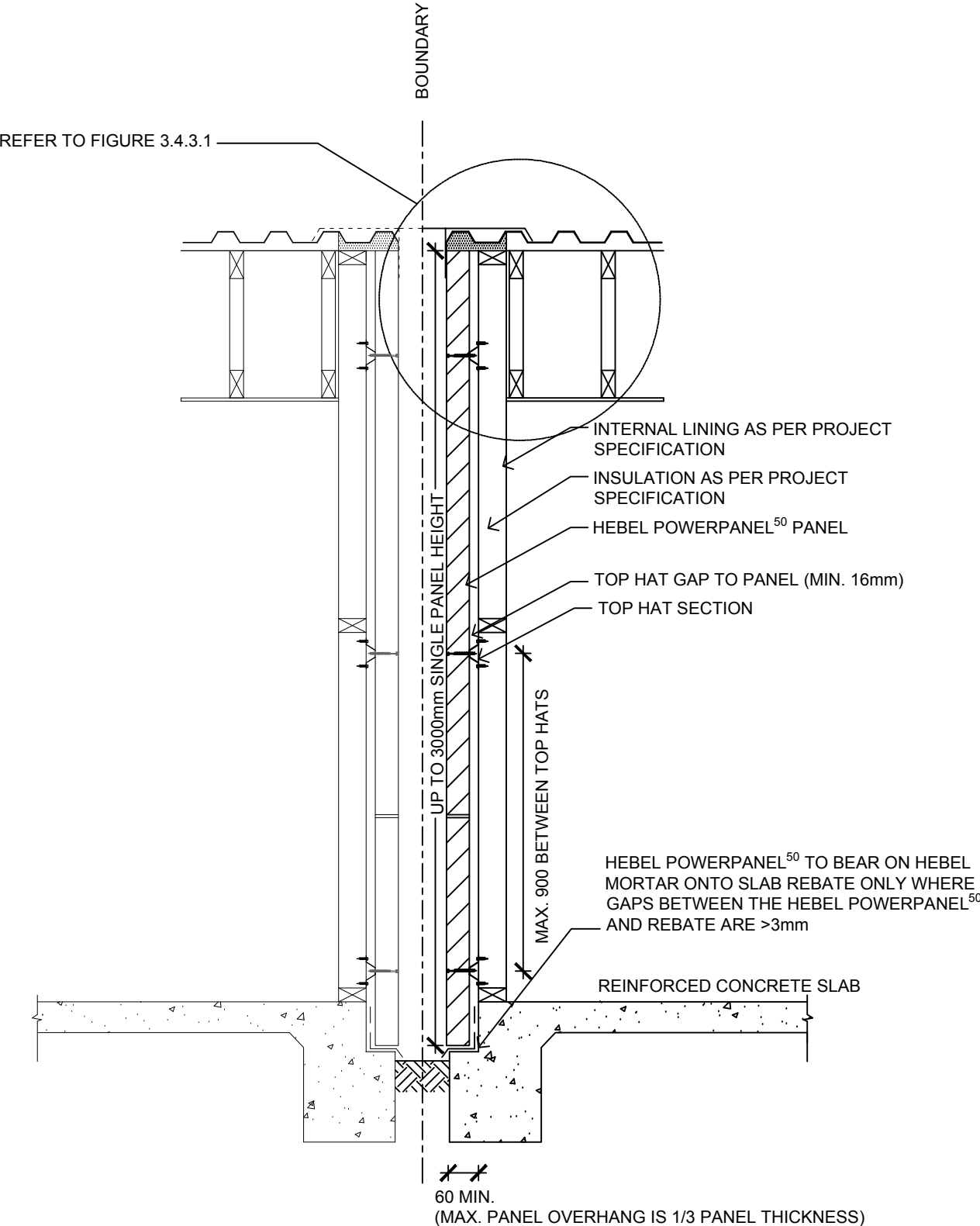


OVERVIEW OF HEBEL POWERPANEL⁵⁰ DUAL ZERO BOUNDARY WALLS

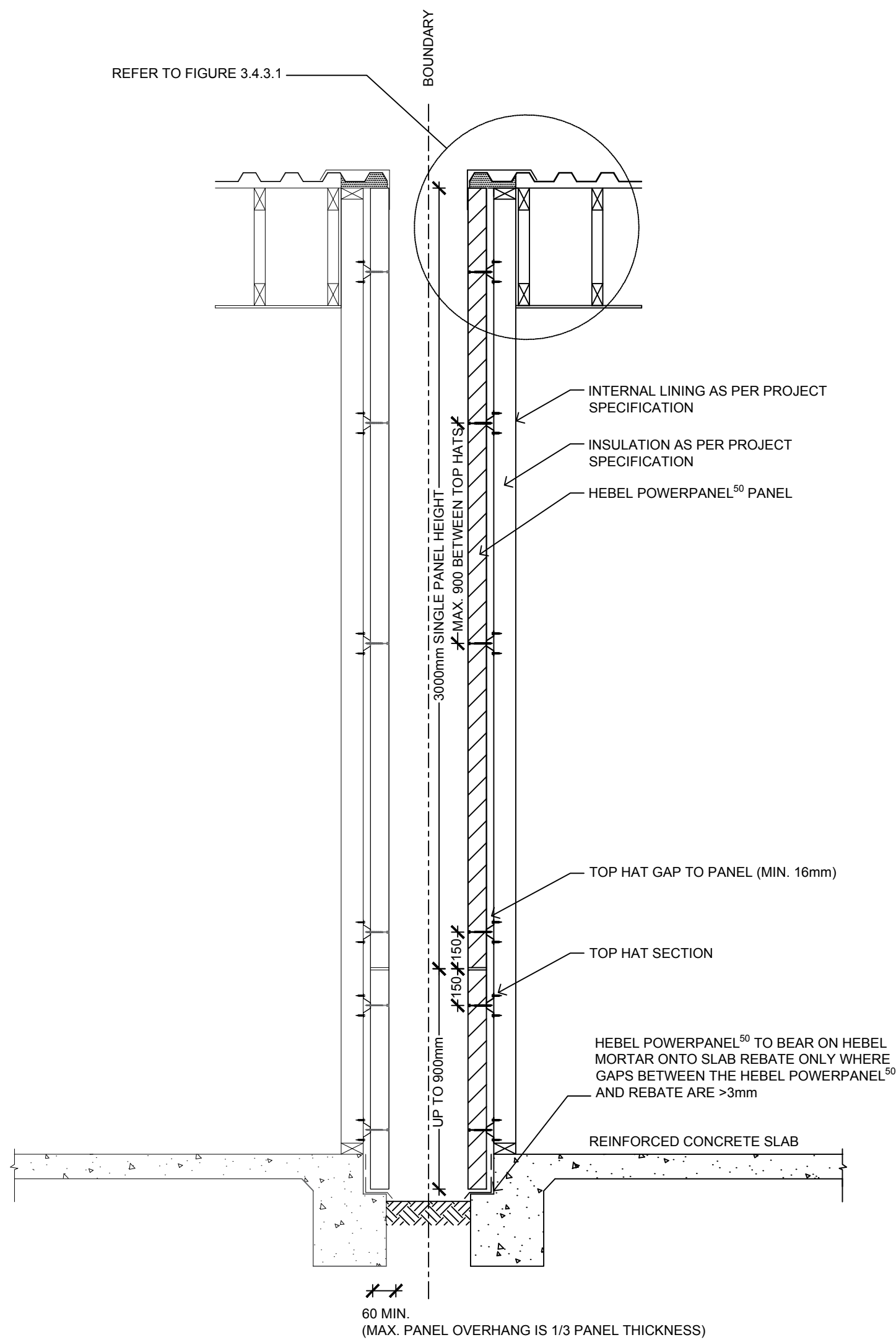


TYPICAL SECTION DETAIL FOR POWERPANEL⁵⁰ DUAL ZERO BOUNDARY WALLS - 3000mm MAX. WALL HEIGHT

SCALE 1:20

<div><div>CSR</div><div>CSR BUILDING PRODUCTS LTD</div><div>Head Office: Trinitti 3, 39 DELHI RD, NORTH RYDE NSW 2113</div><div>LOCKED BAG 1345, NORTH RYDE BC NSW 1670</div><div>A.B.N. 55 008 631 356 Ph: 1300 369 448</div><div>www.hebelaustralia.com.au</div></div> <div><div>hebel</div><div>The better way to build</div><div>CSR Building Products Limited</div><div>A.B.N. 55 008 631 356</div><div>112 Wisemans Ferry Road</div><div>Somersby, NSW 2500</div><div>Phone: (02) 4340 3380</div><div>Fax: (02) 4340 3300</div></div>	FIGURE	TITLE			
	3.4.1.1	OVERVIEW OF HEBEL POWERPANEL ⁵⁰ DUAL ZERO BOUNDARY WALLS			
	DESIGN GUIDE REFERENCE	SCALE	SHEET SIZE	DRAWN	DATE
HELIT152FEB18	1:20 @ A3	A3	ZK	10.04.18	
		SHEET NO.	CHECK	REVISION	
		1	ZK	A	

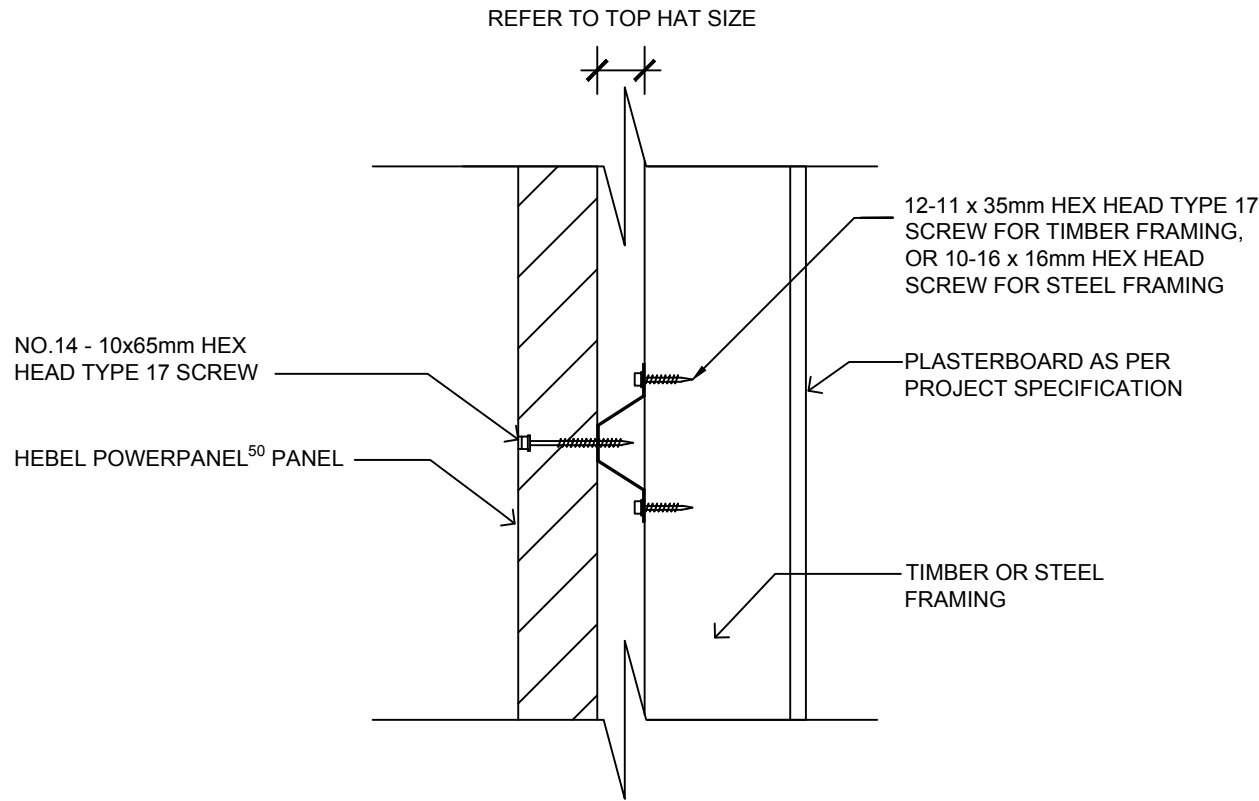
OVERVIEW OF HEBEL POWERPANEL⁵⁰ DUAL ZERO BOUNDARY WALLS



TYPICAL SECTION DETAIL FOR POWERPANEL⁵⁰ DUAL ZERO BOUNDARY WALLS - 3900mm MAX. WALL HEIGHT

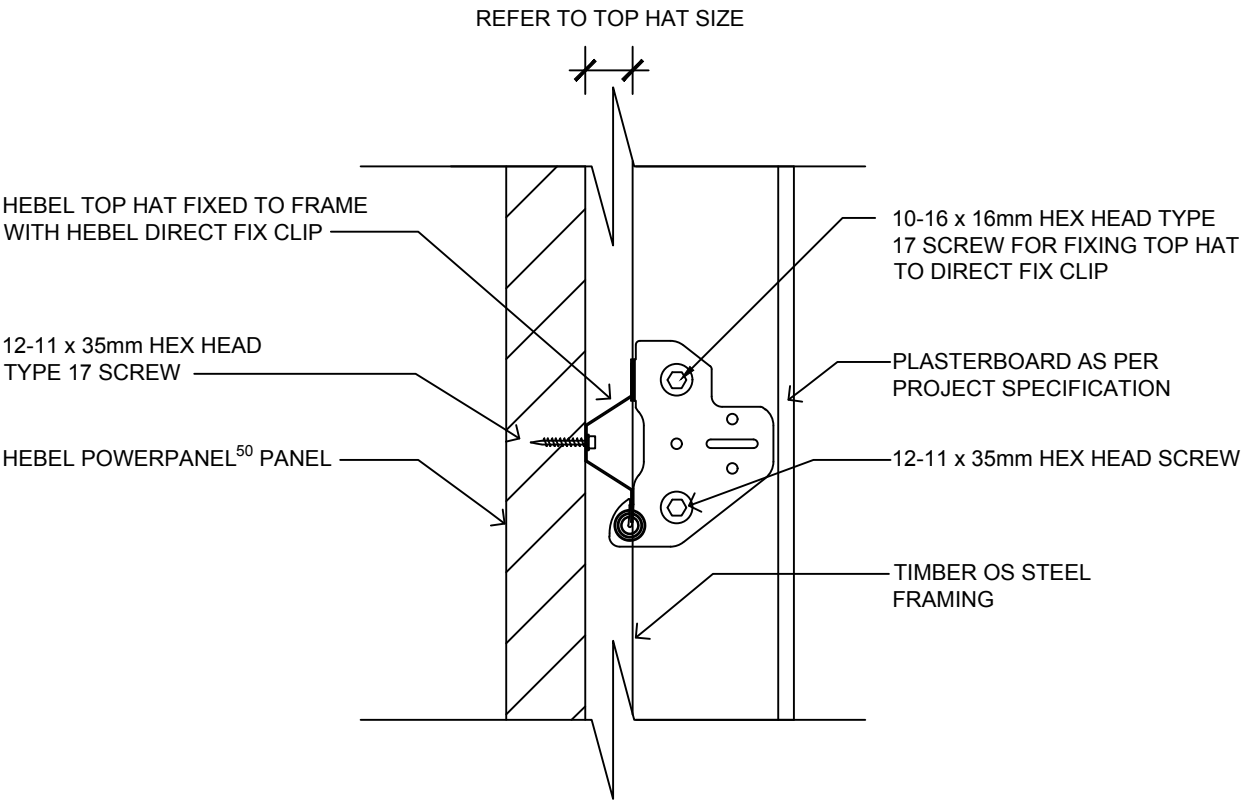
SCALE 1:20

FIXING & INSTALLATION DETAILS



HEBEL POWERPANEL⁵⁰ DUAL ZERO BOUNDARY WALLS
FIXING DETAIL - HEBEL PANEL EXTERNALLY FIXED

SCALE 1:5



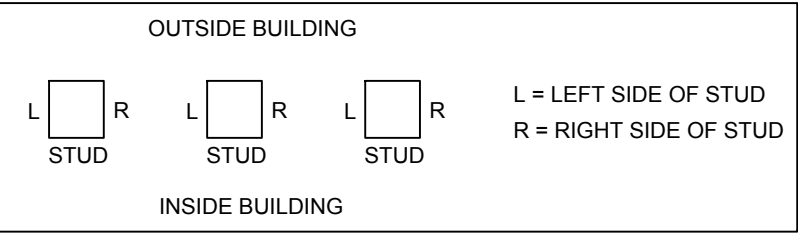
HEBEL POWERPANEL⁵⁰ DUAL ZERO BOUNDARY WALLS
FIXING DETAIL - HEBEL PANEL INTERNALLY FIXED

SCALE 1:5

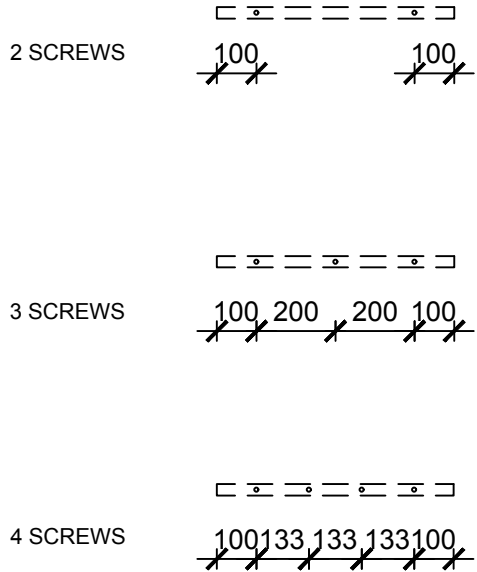
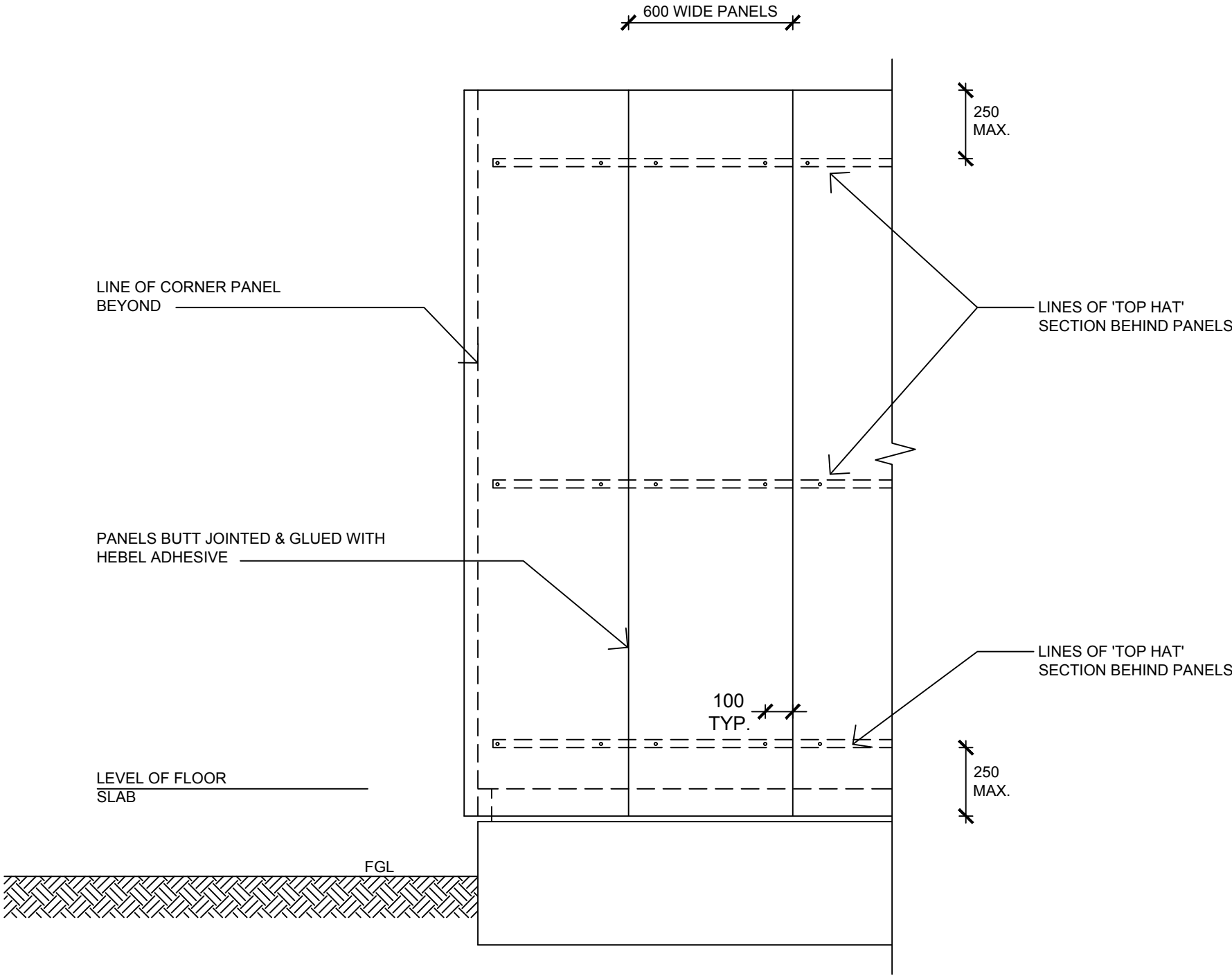
IMPORTANT: TOP HAT CLIP IS FIXED ON THE LEFT HAND SIDE OF THE STUD (WHEN LOOKING FROM INSIDE TO THE OUTSIDE OF THE BUILDING) EXCEPT AT THE LAST STUD, ONLY, WHEN THE CLIP MAY BE INSTALLED UPSIDE DOWN.

INSTALLING THE CLIP UPSIDE DOWN i.e WHERE THE SCREW FIXING FROM THE CLIP TO THE TOP HAT IS AT THE BOTTOM FLANGE OF THE TOP HAT, WILL BE ACCEPTABLE PROVIDED THAT:

- A: THE UPSIDE DOWN CLIP IS FIXED ON THE RIGHT HAND SIDE OF THE STUD (WHEN LOOKING FROM THE INSIDE TO THE OUTSIDE OF THE BUILDING)
- B: THE UPSIDE DOWN CLIP INSTALLATION IS TO THE LAST STUD OF A WALL RUN (ONLY), SUCH THAT THE SPACING BETWEEN THE LAST AND SECOND LAST STUDS IS NO GREATER THAN 600mm,
- C: THE TOP HAT IS CONTINUOUS IN THIS REGION FOR A MINIMUM OF TWO SPANS i.e TOP HAT EXTENDS ACROSS TWO STUD SPACINGS,
- D: IN ALL OTHER LOCATIONS, CLIPS ARE TO BE INSTALLED TO THE LEFT HAND SIDE OF THE STUD WITH THE SCREW FIXING TO THE TOP SIDE OF THE CLIP i.e INTO THE TOP FLANGE OF THE HORIZONTAL TOP HAT.



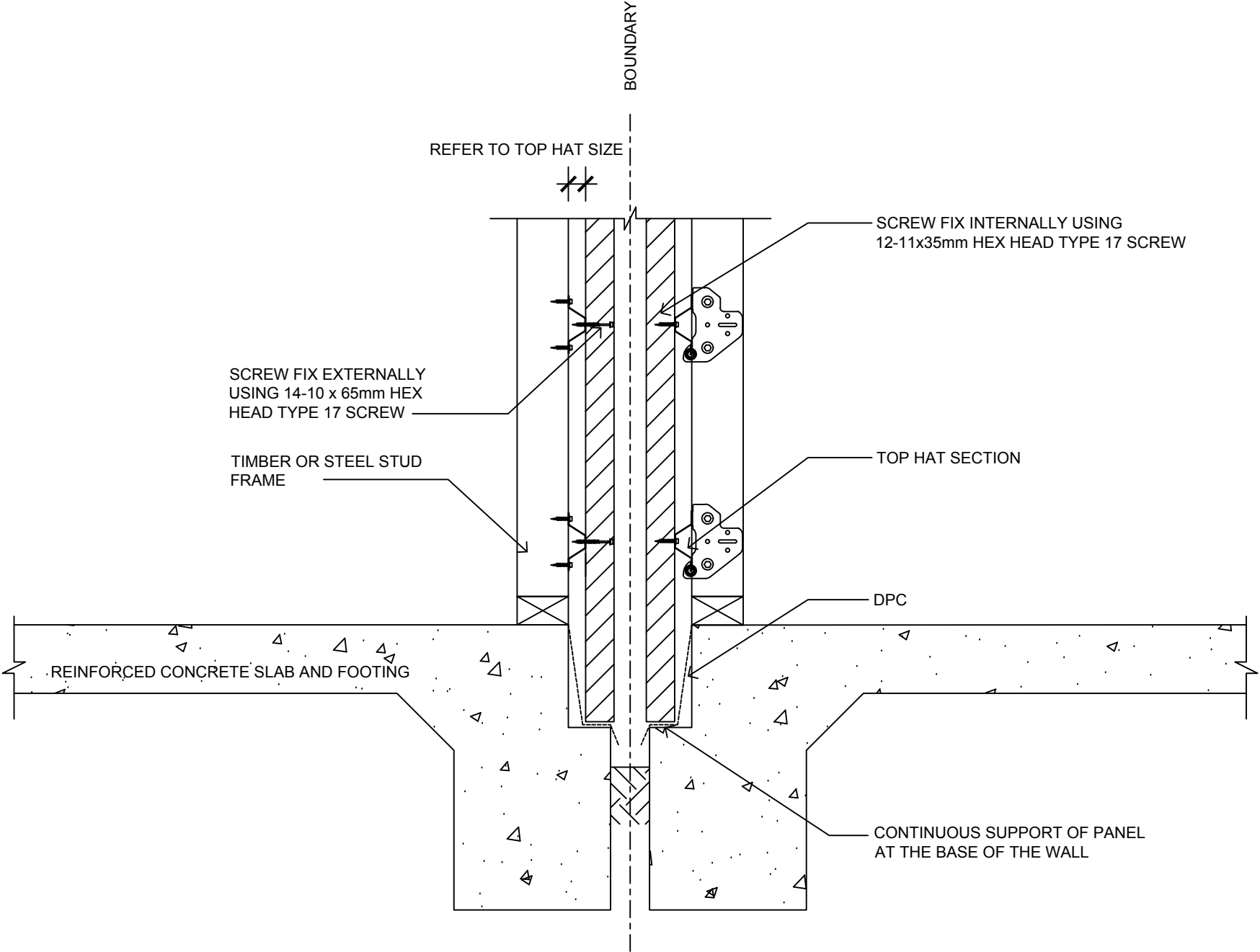
FIXING & INSTALLATION DETAILS



SCREW LAYOUT
SCALE 1:20

SCREW LAYOUT DRAWING
SCALE 1:20

FIXING & INSTALLATION DETAILS



HEBEL POWERPANEL⁵⁰ ZERO BOUNDARY WALL SECTION DETAIL
SCALE 1:10

NOTE:
1. FIXING TOP HAT / BATTENS DIRECTLY TO THE FRAME, OR, CONNECTING TOP HAT / BATTEN TO THE DIRECT FIX CLIP ARE BOTH ACCEPTABLE METHODS OF INSTALLATION.
2. WHEN POSITIONING THE STUD FRAMES ALLOW 5-7mm EXTRA CAVITY WIDTH FOR THE SHEET BRACING BETWEEN TOP HAT AND TIMBER STUD.



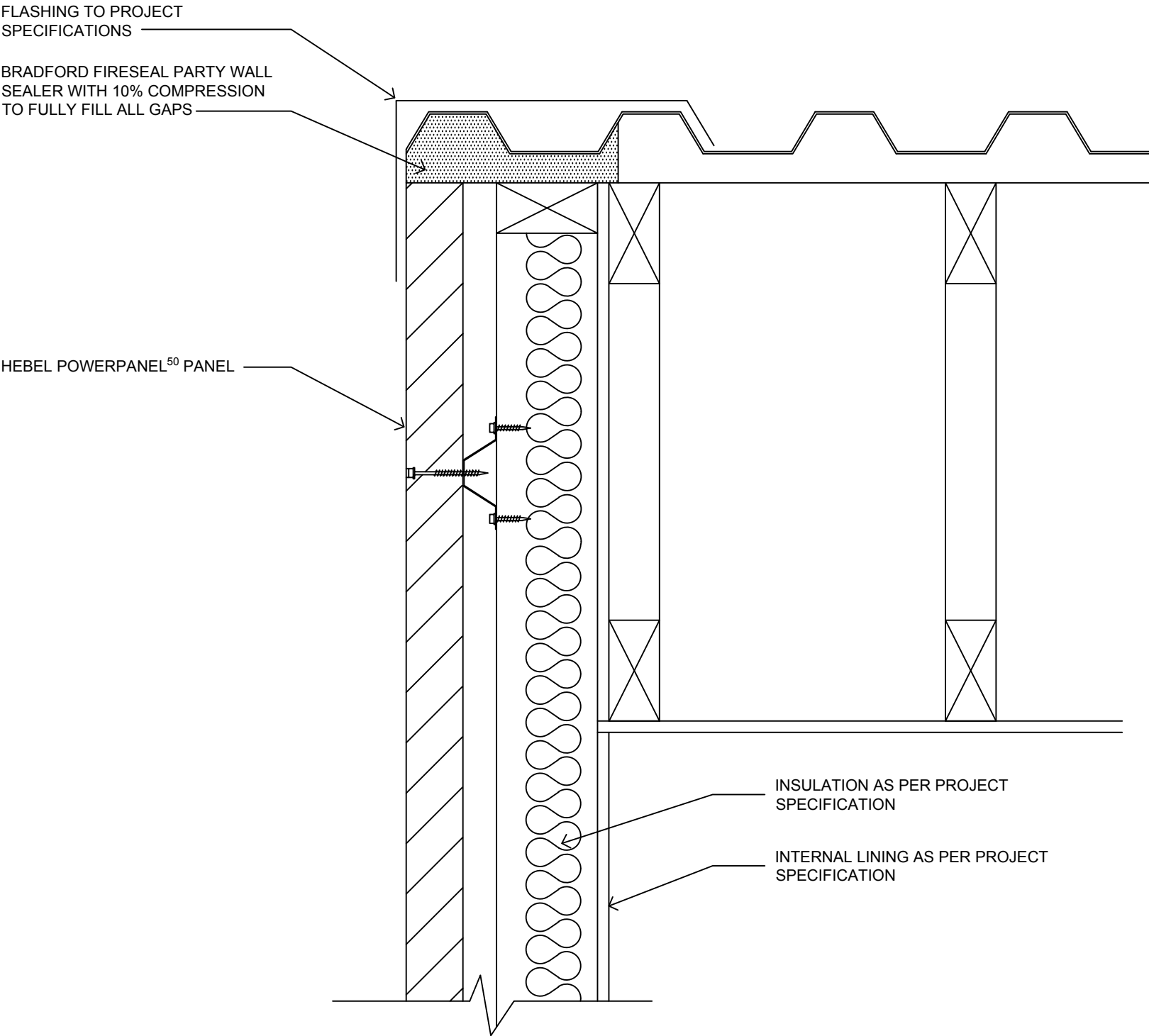
CSR BUILDING PRODUCTS LTD
Head Office: Trinitti 3, 39 DELHI RD, NORTH RYDE NSW 2113
LOCKED BAG 1345, NORTH RYDE BC NSW 1670
A.B.N. 55 008 631 356 Ph: 1300 369 448
www.hebelaustralia.com.au



112 Wisemans Ferry Road
Somersby, NSW 2500
Phone: (02) 4340 3380
Fax: (02) 4340 3300

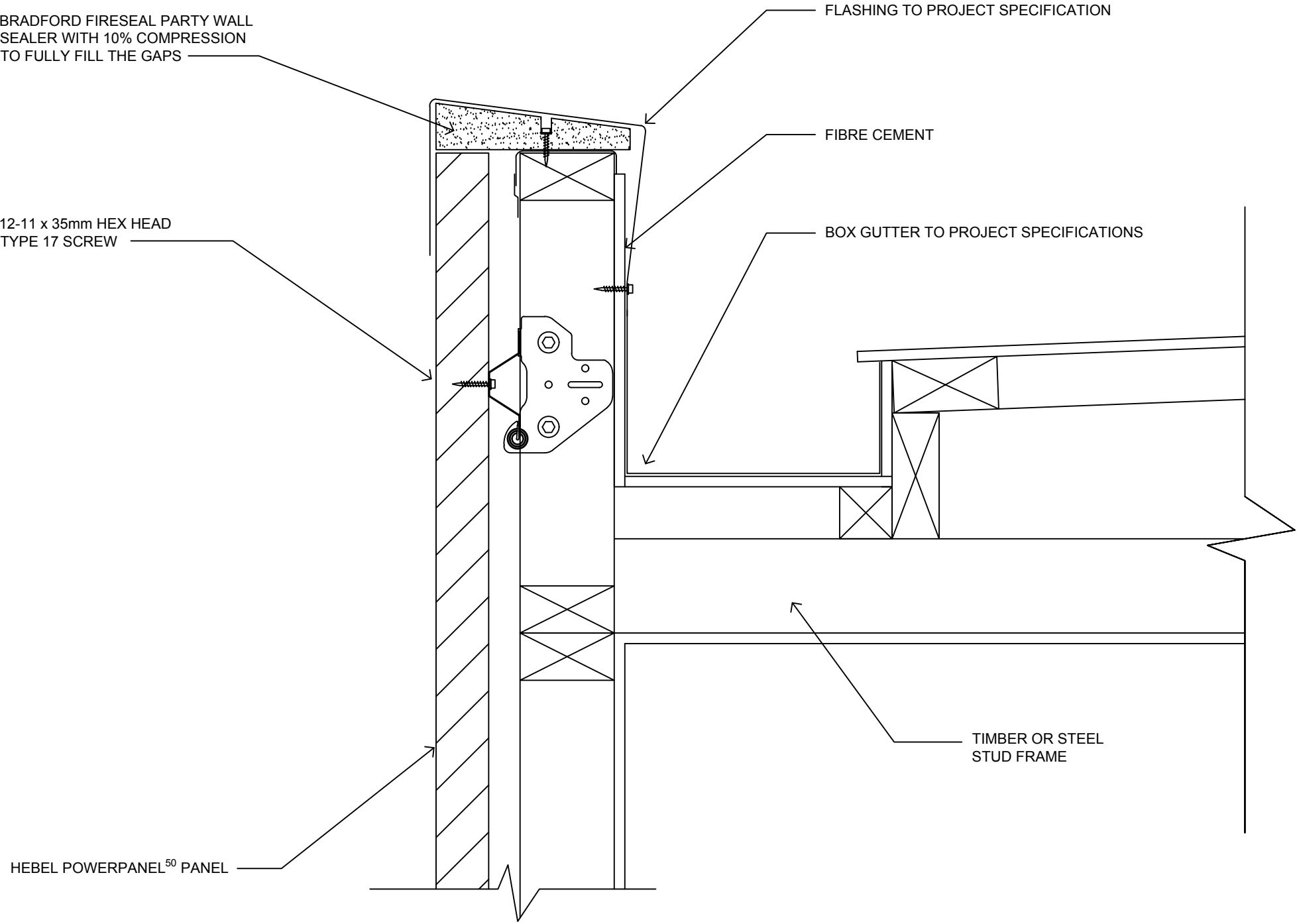
FIGURE	TITLE			
	FIXING & INSTALLATION DETAILS FOR HEBEL POWERPANEL ⁵⁰ DUAL ZERO BOUNDARY WALLS			
DESIGN GUIDE REFERENCE	SCALE	SHEET SIZE	DRAWN	ALTE
HELIT152FEB18	1:10 @ A3	A3	ZK	10.04.18
		SHEET NO. 5	CHECK ZK	REVISION A

WALL JUNCTION DETAILS AND SECTIONS





TYPICAL DUAL ZERO BOUNDARY WALL TO ROOF DETAIL
SCALE 1:5

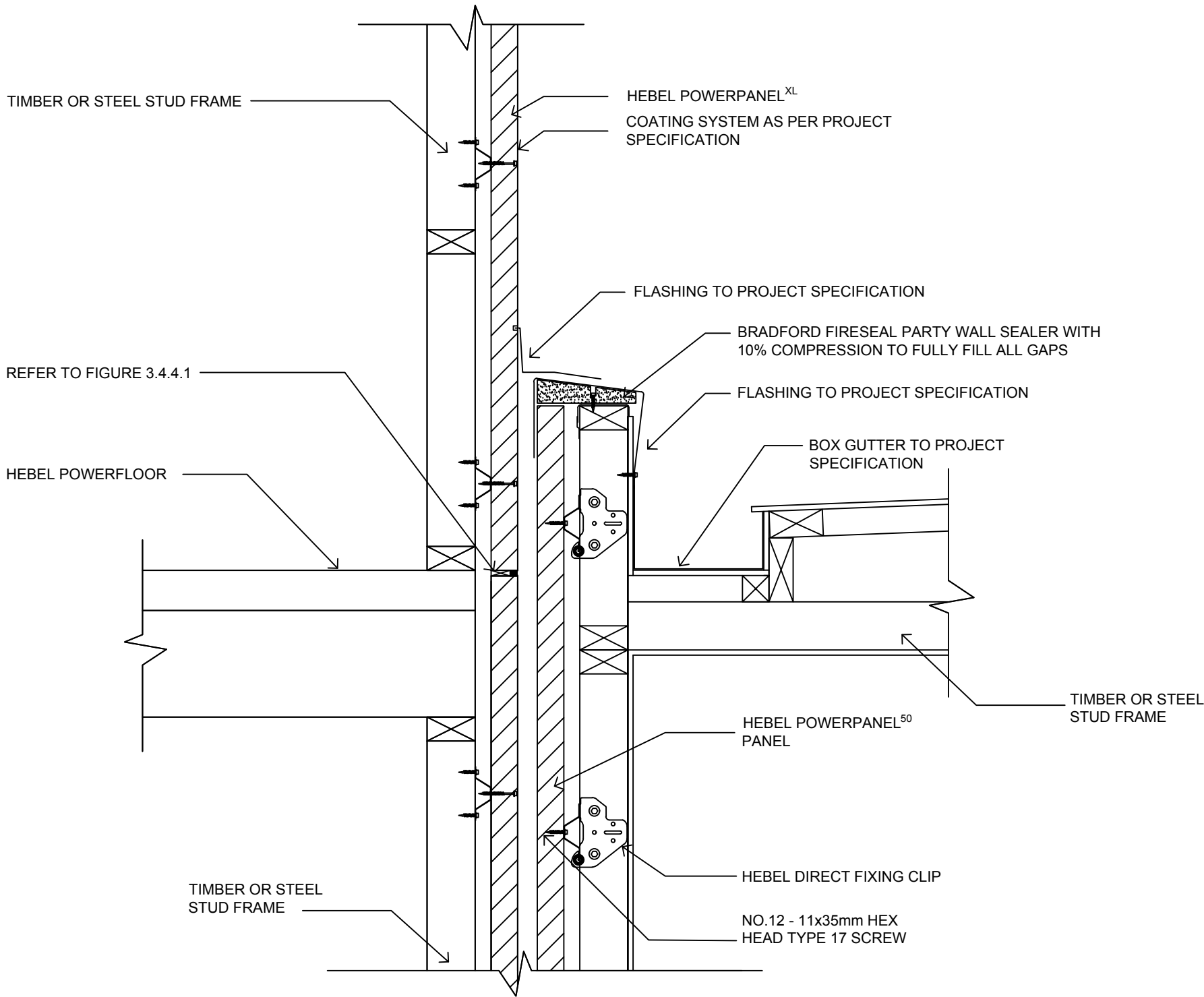
WALL JUNCTION DETAILS AND SECTIONS



TYPICAL DUAL ZERO BOUNDARY ROOF EAVE DETAIL
SCALE 1:5

 <div>CSR BUILDING PRODUCTS LTD Head Office: Trinitti 3, 39 DELHI RD, NORTH RYDE NSW 2113 LOCKED BAG 1345, NORTH RYDE BC NSW 1670 A.B.N. 55 008 631 356 Ph: 1300 369 448 www.hebelaustralia.com.au</div>	 <div>The better way to build</div> <div>CSR Building Products Limited A.B.N. 55 008 631 356</div>	<div>112 Wisemans Ferry Road Somersby, NSW 2500 Phone: (02) 4340 3380 Fax: (02) 4340 3300</div>	FIGURE	TITLE			
			3.4.3.2	WALL JUNCTION DETAILS & SECTIONS FOR HEBEL POWERPANEL ⁵⁰ DUAL ZERO BOUNDARY WALLS			
			DESIGN GUIDE REFERENCE	SCALE	SHEET SIZE	DRAWN	DATE
			HELIT152FEB18	1:5 @ A3	A3	ZK	10.04.18
					SHEET NO. 7	CHECK ZK	REVISION A

WALL JUNCTION DETAILS & SECTIONS



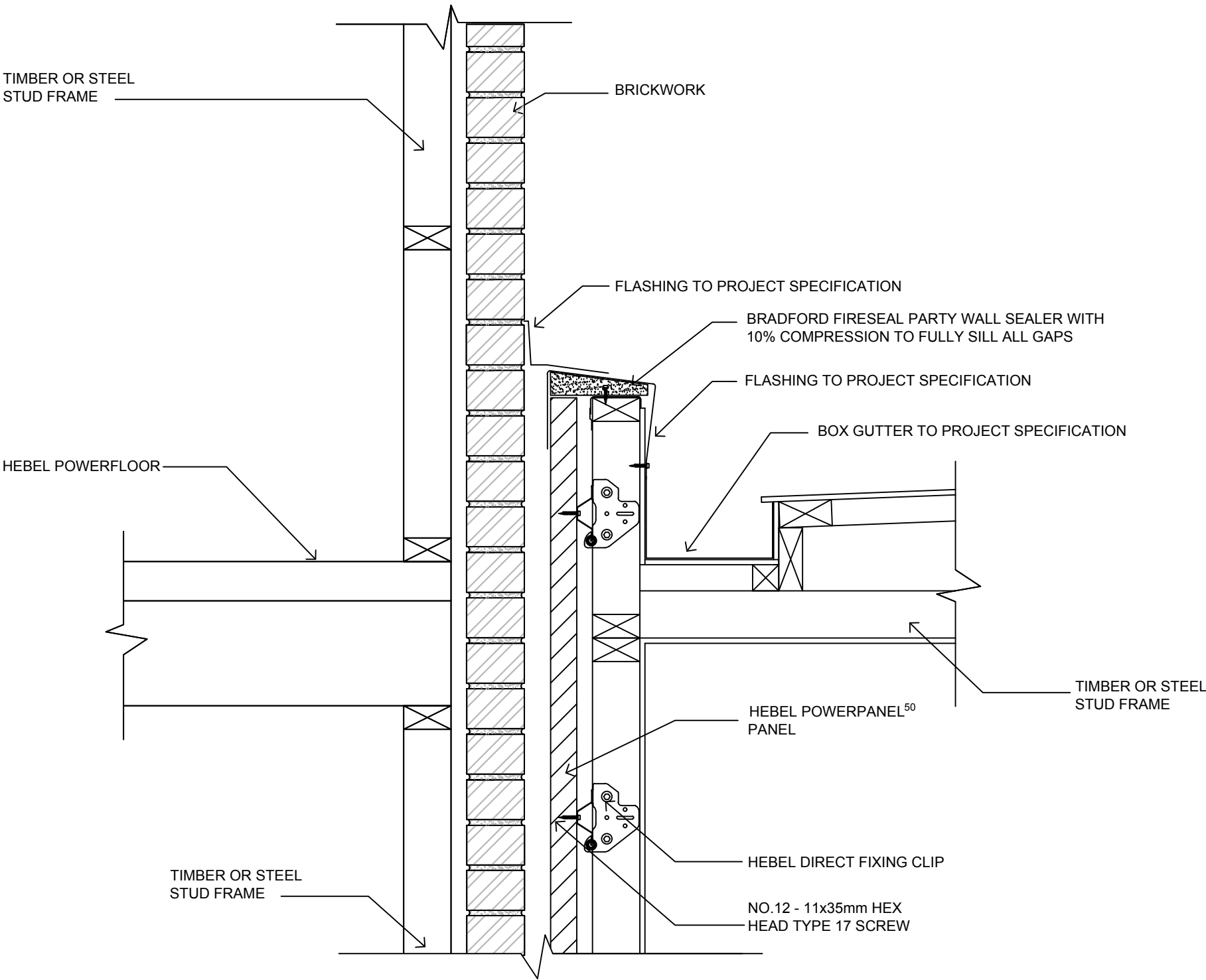
DUAL ZERO BOUNDARY WALL DETAIL TO HEBEL POWERPANEL⁵⁰ EXTERNAL WALLS

SCALE 1:10

NOTE: USING 13mm THICK BRADFORD FIRESEAL DAMPER STRIPS WITH DENSITY OF 110 kg/m³ AT HORIZONTAL CONTROL JOINT IS APPLICABLE FOR DUAL ZERO BOUNDARY WALLS WHEN THE HORIZONTAL CONTROL JOINT IS NOT EXPOSED TO OUTSIDE WEATHER CONDITIONS WHEN THE TOP OF THE WALL IS CAPPED WITH FLASHING BETWEEN BOUNDARY.

 <div>CSR BUILDING PRODUCTS LTD Head Office: Trinitii 3, 39 DELHI RD, NORTH RYDE NSW 2113 LOCKED BAG 1345, NORTH RYDE BC NSW 1670 A.B.N. 55 008 631 356 Ph: 1300 369 448 www.hebelaustralia.com.au</div>	 <div>The better way to build</div> <div>CSR Building Products Limited A.B.N. 55 008 631 356</div>	<div>112 Wisemans Ferry Road Somersby, NSW 2500 Phone: (02) 4340 3380 Fax: (02) 4340 3300</div>	FIGURE	TITLE			
			3.4.3.3	WALL JUNCTION DETAILS & SECTIONS FOR HEBEL POWERPANEL ⁵⁰ DUAL ZERO BOUNDARY WALLS			
			DESIGN GUIDE REFERENCE	SCALE	SHEET SIZE	DRAWN	ALTE
			HELT152FEB18	1:10 @ A3	A3	ZK	21.09.17
					SHEET NO. 8	CHECK ZK	REVISION A

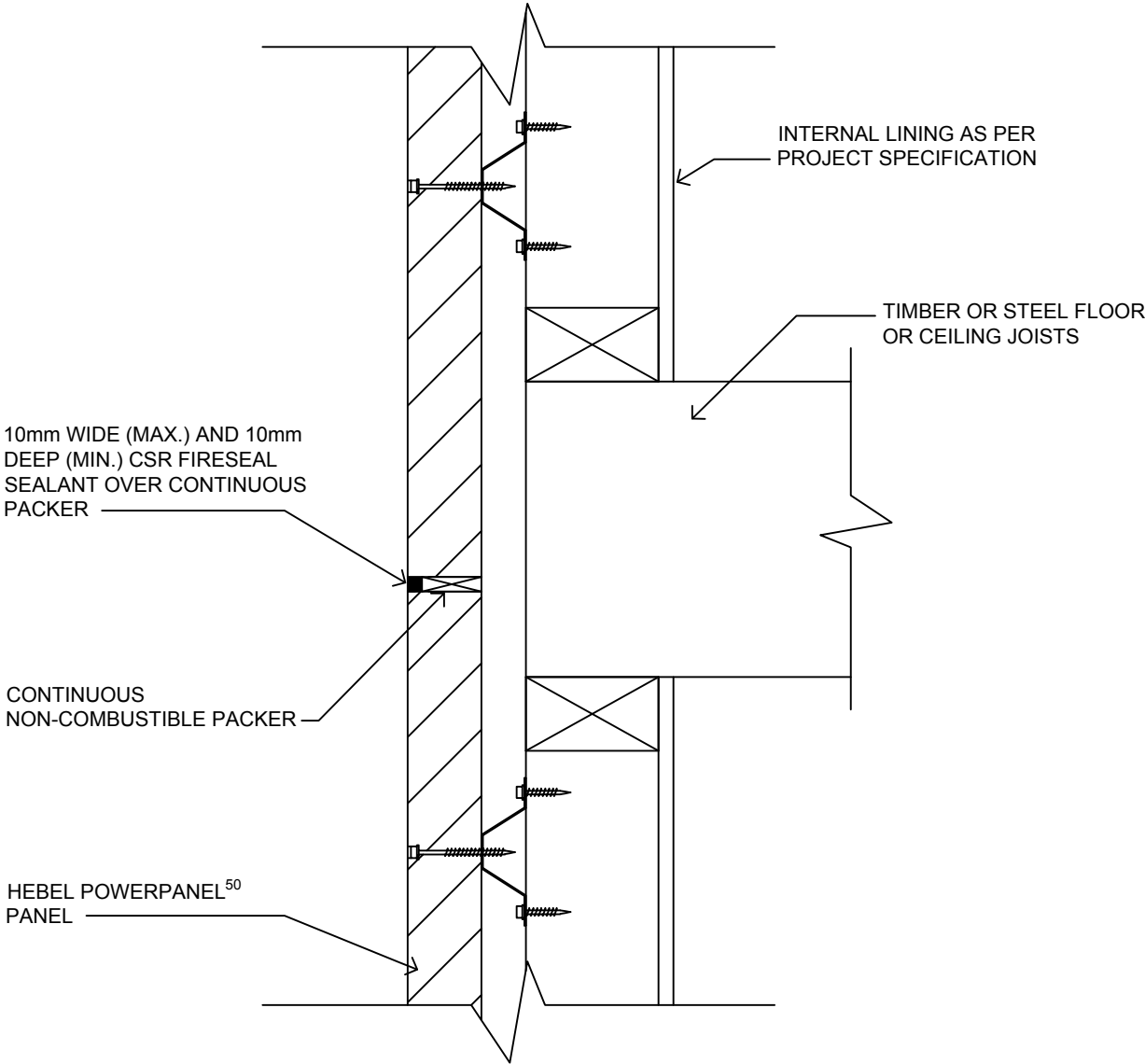
WALL JUNCTION DETAILS & SECTIONS



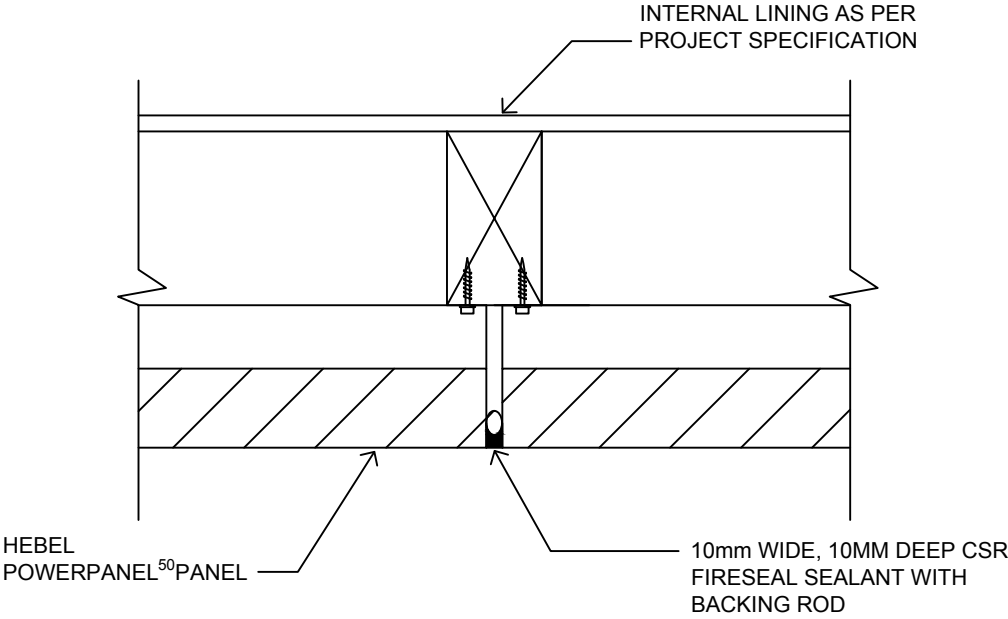
DUAL ZERO BOUNDARY WALL JUNCTION DETAIL TO BRICK VENEER
SCALE 1:10

<div><div>CSR</div><div>CSR BUILDING PRODUCTS LTD</div><div>Head Office: Trinitii 3, 39 DELHI RD, NORTH RYDE NSW 2113</div><div>LOCKED BAG 1345, NORTH RYDE BC NSW 1670</div><div>A.B.N. 55 008 631 356 Ph: 1300 369 448</div><div>www.hebelaustralia.com.au</div></div> <div><div>hebel</div><div>The better way to build</div><div>CSR Building Products Limited</div><div>A.B.N. 55 008 631 356</div><div>112 Wisemanns Ferry Road</div><div>Somersby, NSW 2500</div><div>Phone: (02) 4340 3380</div><div>Fax: (02) 4340 3300</div></div>	FIGURE	TITLE			
	3.4.3.4	WALL JUNCTION DETAILS & SECTIONS FOR HEBEL POWERPANEL ⁵⁰ DUAL ZERO BOUNDARY WALLS			
	DESIGN GUIDE REFERENCE	SCALE	SHEET SIZE	DRAWN	DATE
HELI152FEB18	1:10 @ A3	A3	ZK	10.04.18	
		SHEET NO.	CHECK	REVISION	
		9	ZK	A	

CONTROL JOINTS



TYPICAL HORIZONTAL CONTROL JOINT
SCALE 1:5



TYPICAL VERTICAL CONTROL JOINT
SCALE 1:5